

## STANDARD SPECIFICATIONS

(Based on Model CH612 4x2 Tractor)

Canadian orders require Engine Block Heaters.

### ENGINE: MACK, AC-310/330 ASET

Horsepower, 310 HP [231 kW] at 1800 Gov. RPM  
Peak Horsepower, 330 HP [246 kW] at 1400-1500 RPM  
Max. Torque, 1360 lb/ft [1 844 N•m] at 1100 RPM  
V-MAC III—Total Vehicle Electronics  
Lube Oil System, Full Flow ESI +  
Centri-Max® Ultra  
Centrifugal Oil Filter  
Flywheel Housing, Aluminum  
Silicone Hoses and Tubing on Engine  
Air Compressor, Chassis Mounted 18.7 cfm min. rtg. w/  
Air Governor

#### Starting System

Starter, 12-Volt 39MT Type 500  
Batteries, (3) Mack 12-Volt M/F Type, 650 CCA  
Total 1950 CCA with Kalas Cables  
Alternator, 12V 100A, Delco (22 SI)

#### Air Intake System

Air Cleaner, 11" [279 mm] Single Element  
Dry Type, Under Hood  
Air Intake from Both Sides of Hood  
Air Restriction Monitor, Grad. Lock Up Type(Air Intake Mtd.)  
Exhaust, Vertical w/Muffler Heat Shield  
Cooling System—Shutterless Type  
Aluminum Radiator  
Anti-Freeze to -10°F [-23°C]  
Fan Drive, Electronically Modulated Type w/Lightweight Plastic Fan  
Poly-V Fan Belt with Automatic Tensioner  
Coolant Recovery Tank—6 Quart [5.7L]  
PowerLeash Engine Brake

### CLUTCH: EATON FULLER, CL798

15.5" [394 mm] Dampened Ceramic Facings Disc,  
2-Plate, Coaxial Spring

### TRANSMISSION: FULLER, FRO-13210C

10-Speed, Ratios: 12.69 Low—0.74 High  
Driveline: Meritor 17N HD w/Coated Splines

### CAB: CONVENTIONAL, CA65

#### Interior Features:

Basic: Trim Level; Color: Select Pewter Gray  
Ash Tray  
Cigar Lighter  
CB—5-way Binding Post  
Coat Hook  
Dispatch Box  
Overhead Console  
Radio Accommodations  
Air Conditioner w/Integral Heater with R134a Refrigerant  
Dome Light w/Self-Contained Switch "On" when Driver or  
Rider Side Door is Open  
Door Mounted Courtesy Lamp, "On" when Driver or  
Rider Side Door is Open  
Steering Wheel, 18" Dia. 2-Spoke Soft Feel  
Tilt & Telescoping Steering Column

#### Seats:

Driver's, Bostrom Talladegha 915 (Mid-Back)  
Rider's, MACK Non-Suspension (Mid-Back)  
Seat Belts—Driver's and Rider's  
Lap & Shoulder w/Seat Belt Retractor & "Komfort Latch"  
Sun Visor—Left Side  
Floor Mats, Rubber w/Closed Cell Vinyl Nitrile Backing

# MACK

## CHN602 SERIES

### CHASSIS



- Conventional Chassis
- Front Axle Forward
- 4-Wheel Tractor
- ABS (Anti-Lock Brake System)

The MACK CHN602 is for fleet owner and owner-operator alike, a total chassis optimized through computer-aided design for an excellent strength-to-weight ratio. The cab incorporates exceptional room and comfort with the highest standards of fit and finish. Available with or without one of the integrated sleepers with unified aerodynamics. Either way the cab ride is an innovative cab air suspension, with a sleeper subframe for unsurpassed smoothness and comfort. The quiet roomy interior caters to the driver's every need.

#### STANDARD

**ENGINE:** MACK AC310/330 ASET  
330 HP [246 kW] Peak Horsepower

**TRANSMISSION:** FULLER, FRO-13210C  
10-Speed

**FRONT AXLE:** MACK FXL12  
12,000 lb. [5 443 kg] Capacity

**REAR AXLE:** MERITOR RS-23-161  
23,000 lb. [10 433 kg] Capacity  
Suspension: Multileaf Spring



Mack Trucks, Inc., Allentown, Pennsylvania

**STANDARD SPECIFICATIONS**

(Continued)

**CAB:** continued

## Interior Features: Operational:

T.M.C. Recommended Instrument Panel  
Air Pressure Gauge  
Voltmeter  
Fuel Level Gauge  
Engine Oil Pressure Gauge  
Engine Coolant Temperature Gauge  
Low Air Pressure Indicator (Light and Buzzer)  
Speedometer/Trip Odometer, Electronic  
Tachometer w/Hourmeter, Electronic  
High Beam Indicator  
Parking Brake On Indicator  
Key Type Starting  
Hand Throttle Control  
Engine Shutoff, Key-Type Control  
Courtesy Light Switch (Head & Clearance)  
Directional Signal Switch

## Exterior Features:

Welded Steel Shell, Galvanized  
MACK Rust Preventative Procedures  
Safety Glass Windows  
Tinted Windshields, Side and Rear Windows  
Conspicuity Treatment, Back of Cab  
Windshield Wipers—Dual Actuated Arms, Cowl Mtd.  
Wiper Motor Two Speed Electric with Intermittent Feature  
Windshield Washers, Electric, Wiper Arm Mtd. with  
Reservoir Mounted Under Hood  
Mirrors, West Coast Bulldog Bright Finish,  
RH & LH w/Stainless Steel Arms & Brackets  
(Brackets will accommodate 96" [2 438 mm]  
and 102" [2 591 mm] width trailers)  
Headlamps—Flush Mounted Halogen—Single Rectangular  
w/Lexan Lens (Replaceable Bulb) Bezel—Bright Finish  
(molded plastic)  
Daytime Running Lights  
Identification and Clearance Lamps (5)  
Side Markers—Lamps and Reflectors  
Front Integral Turn Signals with Fender  
Transistorized Flasher  
Horns, (2) MACK Rectangular Single Trumpet Air Horns,  
Electric, (Single Tone)  
Doors—Galvanized Steel with:  
Visibility Door with Roll-Up Tinted Windows  
Grab Handles (Aluminum), RH & LH Behind Door  
Cab Mounting:  
Two Mounting Brackets at Front  
Air Isolation at Rear

**HOOD & FENDERS: FIBERGLASS**

One Piece Fiberglass with Wheel Splash Aprons  
Tilts Forward 75° with Spring Assist  
Grille—Hood Mounted Bright Finish with Black Background

**FRAME:**

WB—Wheelbase—154" [3 910 mm]  
LP—Load Platform—111" [2 819 mm]  
CA—Cab to Axle—70.4" [1 787 mm]  
AF—C/L Axles to End of Frame—41" [1 041 mm]  
Frame Rails—Steel  
Cross Section—10.47" x 3.54" x .24" [266 x 90 x 6 mm]  
Section Modulus—11.52 in.<sup>3</sup> [189 cm<sup>3</sup>]  
RBM (per rail)—1,390,000 lb. in. [158 000 N•m]  
Tapered and Flanged—28° Rail Ends  
Bumper: Steel Bumper Painted Chassis Color in Standard Position  
with Plastic Flexible Ends  
BBC—Bumper to Back of Cab—113.4" [2 880 mm]  
Towing: Clevis (2)  
Fifth Wheel: Fontaine SL3ASB Air Slide

**FUEL TANKS:**

Aluminum, 26" [640 mm] Dia.  
Capacity/Location, 72 gal [320 L] LH & RH

**FRONT AXLE: MACK FXL12**

Front Axle Forward  
12,000 lb [5 443 kg] Capacity  
Brakes, "S" Cam 15" x 4" [381 x 102 mm]  
Meritor "Q-Plus" Brakes w/o Dust Shields  
Slack Adjusters—Automatic  
Suspension, MACK Taperleaf Spring (2 Leaf) with  
12,000 lb [5443 kg] Ground Load Rating  
Shock Absorbers  
Integral Power Steering  
Wheel Equipment, 22.5" x 8.25" Accuride 10 Hole, 11.25"  
Bolt Circle, 5 Hand Holes Hub Piloted Steel Disc Wheels  
Wheel Seals—Oil  
Tires: 295/75R22.5 (singles)

**REAR AXLE: MERITOR RS-23-161**

23,000 lb [10 433 kg] Capacity Axle  
Carrier—Malleable  
Suspension—Mack - 23,000 lb [10 433 kg] Capacity  
Air Suspension  
Brakes—"S" Cam 16.5" x 7" [419 x 178 mm]  
Meritor "Q-Plus" Brakes w/o Dust Shields  
Slack Adjusters—Automatic  
Aux. Spring Brake Chambers,  
30/30 Double Diaphragm Type,  
Mechanical Spring Release  
2 Units  
Wheel Equipment, 22.5" x 8.25" Accuride 10 Hole, 11.25"  
Bolt Circle, 5 Hand Holes Hub Piloted Steel Disc Wheels  
Wheel Seals—Oil  
Tires: 295/75R22.5 (duals)

**AIR/BRAKE:**

ABS (Anti-Lock Brake System)  
Dual Air Brake System  
Air Reservoirs—  
Two Steel, Horizontal Mtd. on RH Rail Forward of Fuel  
Tank, Primary—Single Compartment Tank, Supply/  
Secondary—Two Compartment  
Capacity—5,600 in<sup>3</sup> [92 L]  
Air Dryer—Heated  
Semi-Trailer Connection Package  
Air Brake Grouping  
Chassis Mtd. Pogo Stick  
12-ft Air Hose (2)  
Glad Hand (2)  
Glad Hand Storage Bracket  
(B.O.C.—LH Ground Reachable)  
Breakaway Safety Valve  
Hand Control Valve for Trailer Brakes  
Electric Grouping  
12-ft (7-Wire) Cord  
7-Wire Plugs

**ELECTRICAL:**

Steel Battery Box with Molded Plastic Cover Mtd.  
Forward of LH Fuel Tank  
Chassis Electrical  
Negative Ground  
12-Volt Electrical Circuits and Bulbs  
Fuse Protected Circuits  
Breaker Protected Headlamp & Windshield Wiper Circuits  
Rear Lighting, (2) Combination Stop, Tail Directional &  
Back-up Lights  
Trailer Electrical Package for Doubles Operation

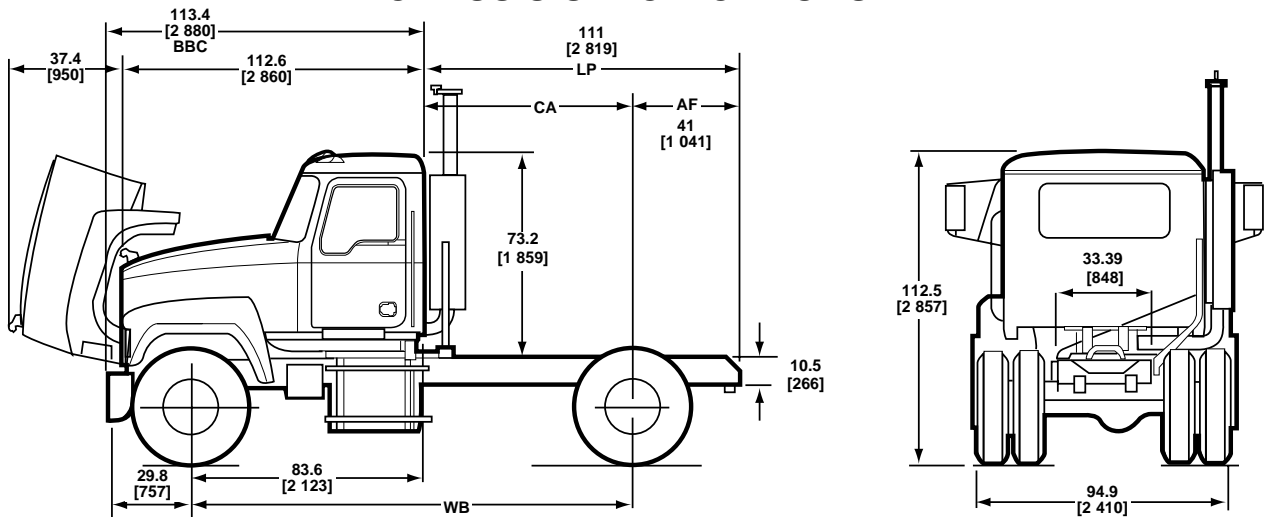
**PAINT:**

Cab, Hood and Fenders  
Color: MACK White, High Gloss Urethane  
Chassis Running Gear  
Color: MACK Black (Urethane)

**WEIGHT:**

Front: 7,230  
Rear: 4,522  
TOTAL: 11,752

## CHASSIS SPECIFICATIONS



## AVAILABLE DRIVELINE COMPONENTS

TRANSMISSIONS		
MODEL	SPEEDS	RATIOS (LOW/HIGH)
<b>MACK</b>		
T309	9	11.40/0.71
T309(L)	9	13.93/0.71
T309(LR)	9	13.93/0.71
T310	10	13.81/0.73
T310M	10	17.35/0.73
T310ME	10	17.35/0.73
T313LR	13	16.42/0.71
T313 L	3	16.42/0.71
T318LR	18	16.42/0.71
T318L	18	16.42/0.71
T318L21	18	16.42/0.71
<b>ALLISON</b>		
4000 HS	5	3.51/0.74
4000 HS	6	3.51/0.64
4500 HS	5	4.70/0.76
4500 HS	6	4.70/0.67
<b>FULLER</b>		
RTX-13609B	9	12.57/0.73
RTX-14609B	9	12.57/0.73
RTX-16709B	9	12.46/0.73
FR-13210B	10	14.80/1.00
FR-14210B	10	14.80/1.00
FRO-13210B	10	11.06/0.75
FRO-13210C	10	12.69/0.74
FRO-14210B	10	11.06/0.75
FRO-14210C	10	12.69/0.74
FRO-15210B	10	11.06/0.75
FRO-15210C	10	12.69/0.74
FRO-16210B	10	11.06/0.75
FRO-16210C	10	12.69/0.74
RTO-14908LL	10	14.56/0.74
RTO-16908LL	10	14.56/0.74
RTO-16909ALL	11	26.08/0.73
RTLO-14913A	13	12.31/0.73
RTLO-16913A	13	12.31/0.73
RT-14915	15	16.94/1.00
RTO-14915	15	13.29/0.79
RTO-16915	15	13.29/0.79
RTLO-14918B	18	14.40/0.73
RTLO-16918B	18	14.40/0.73
<b>FULLER LIGHTNING TOP 2</b>		
FRLO-14410C-T2	10	12.66/0.74
FRLO-15410C-T2	10	12.66/0.74
FRLO-16410C-T2	10	12.66/0.74

ENGINES			
MODE	*HORSEPOWER @ GOV'D. RPM	MODEL	*HORSEPOWER @ GOV'D. RPM
<b>MACK—ASET CEGR</b>			
AC-310/330	310 HP [231 kW] @1800 330 HP [246 kW] @ 1400-1500	AC-400	400 HP [298 kW] @1800 400 HP [298 kW] @ 1500-1800
AC-330/350	330 HP [246 kW] @1800 350 HP [261 kW] @ 1400-1500	AC-427	427 HP [318 kW] @1800 427 HP [318 kW] @ 1600-1800
AC-355/380	355 HP [265 kW] @1800 380 HP [284 kW] @ 1400-1500	AC-460P	460 HP [343 kW] @1850 487 HP [363 kW] @ 1600-1700
AC-380/410	380 HP [238 kW] @1800 410 HP [305 kW] @ 1400-1500	AC-460E (ECONOMY)	460 HP [343 kW] @1800 460 HP [343 kW] @ 1600-1800
AC-350	350 HP [261 kW] @1800 350 HP [261 kW] @ 1500		

TRANSMISSIONS (Continued)					
MODEL	SPEEDS	RATIOS (LOW/HIGH)	MODEL	SPEEDS	RATIOS (LOW/HIGH)
<b>FULLER LIGHTNING W/O TOP 2</b>					
FRLO-14410C	10	12.66/0.74	FRLO-16410C	10	12.66/0.74
FRLO-15410C	10	12.66/0.74			
<b>GENERATION II—FULLER AUTO SHIFT</b>					
RTO-14910B-AS2	10	10.96/0.74	RTO-16910C-AS2	10	12.80/0.73
RTO-16910B-AS2	10	10.96/0.74	RTLO-14918C-AS2	18	12.19/0.73
RTO-14910C-AS2	10	12.80/0.73	RTLO-16918C-AS2	18	19/0.73
<b>GENERATION II—FULLER ULTRA SHIFT</b>					
RTO-14910B-DM2	10	10.96/0.74	RTO-16910B-DM2	10	10.96/0.74
<b>MERITOR</b>					
M-14G10A-M14	10	15.02/1.00	MO-13G10C-M13	10	12.72/0.73
M-15G10A-M15	10	15.02/1.00	MO-14G10A-M14	10	11.19/0.74
MO-11G10A-M11	10	11.19/0.74	MO-14G10C-M14	10	12.72/0.73
MO-11G10C-M11	10	12.72/0.73	MO-15G10A-M15	10	11.19/0.74
MO-13G10A-M13	10	11.19/0.74	MO-15G10C-M15	10	12.72/0.73

AXLES					
CAPACITY	MAKE	MODEL	CAPACITY	MAKE	MODEL
<b>FRONT AXLES</b>			<b>SINGLE REAR AXLES</b>		
12,000 lb. [5 443 kg]	MACK	FXL 12	23,000 lb. [10 433 kg]	MACK	RA23R
	DANA SPICER	E1202I		DANA SPICER	23105S
	MERITOR	FF961 or FF981		MERITOR	RS-161/186
14,600 lb [6 623 kg]	MACK	FXL 14.6			

**OPTIONAL EQUIPMENT**

**FRAME:**

**Optional Frame Rails**

Rail Dimensions: 10.47" x 3.54" x .28" [266 x 90 x 7 mm]  
 Section Modulus: 13.3 in.<sup>3</sup> [217.9 cm<sup>3</sup>]  
 Resisting Bending Moment, RBM: 1,600,000 lbs. in. [180 000 N•m]

Rail Dimensions: 10.47" x 3.54" x .32" [266 x 90 x 8 mm]  
 Section Modulus: 15.0 in.<sup>3</sup> [245.8 cm<sup>3</sup>]  
 Resisting Bending Moment, RBM: 1,810,000 lbs. in. [203 000 N•m]

**Wheelbase Availability**

154" [3 912 mm] to 183" [4 648 mm]

**CAB, INTERIOR TRIM LEVELS:**

**Trim Level I - Select:** Pewter Gray; Dark Fieldstone (Day Cab Only)

**Trim Level II - Premium:** Garnet Red, Glacier Blue or Desert Sand or Dark Fieldstone Interiors available (Color is accent on base gray background)

**Trim Level III - Elite:** Garnet Red, Glacier Blue or Desert Sand Interiors available (Color is accent on base gray background)

**SLEEPER BOXES:** Interior Color Matches that of the Cab Interior; Sleeper Box Integral with Cab Mounting

**48" [1 219 mm] Flat Top**

**56" [1 423 mm] Flat Top**

**60" [1 524 mm] Mid Rise**

**70" [1 778 mm] Mid Rise**

**70" [1 778 mm] High Rise**

**AERO AIDS:**

Roof Fairing  
 Side Shields

**OTHER OPTIONAL EQUIPMENT:**

Air Compressor Options  
 Air Dryer Options  
 Air Horns  
 Air Reservoirs, Aluminum  
 Back-Up Alarm  
 Battery Box Cover, Aluminum  
 Battery Disconnect Switch  
 Battery Options  
 Brake Equipment Options  
 Bright Finish Equipment:  
     Air Reservoirs  
     Battery Box Cover  
     Exhaust Systems  
     Fuel Tanks  
     Mirrors and Brackets  
     Steps  
     Wheels, Disc  
     Wheel Nuts  
 Bug Screen  
 Bumper, Clad Aluminum  
 CB Radio Options  
 Cab Accessories  
 Cellular Phone  
 Chassis Keyed Alike  
 Clutch, Self-Adjusting  
 Coolant Protection to -40°F  
 Crossmember Options  
 Drain Valve, Automatic  
 Driveline, Increased Size  
 Electrical Circuit Breaker

Electrical:  
     Starter Options  
     Alternator Options  
 Engine Brake  
 Engine Cold Starting Aids  
 Engine Heaters  
 Exhaust, Dual Vertical  
 Fifth Wheels and Related Equipment  
 Fog/Driving Lights  
 Fuel Heaters  
 Fuel System:  
     Fast Fill & Accessory Options  
     Dual Draw  
 Fuel/Water Separators  
 Gauge Cluster Options:  
     Air Application  
     Axle Oil Temperature  
     Engine Oil Temperature  
     Exhaust Pyrometer  
     Manifold Pressure  
     Transmission Oil Temperature  
 Headlamp Options  
 Hubodometer  
 Inside/Outside Air Intake  
 Interwheel Power Divider  
 Inversion Valve, Spring Brakes  
 Mirror Options  
 Paint Designs (Cab & Hood)  
 Power Take-Off Options & Clearances  
 Power Windows and Door Locks  
 Quarter Fenders

Radio Options, Stereo/Cassette/CD  
 Rear Axle Carrier Options  
 Seat Options, Driver & Rider  
 Sleeper Box Interior Options  
 Sun Visor, Exterior/Interior  
 Suspension, Rear Axle: Multileaf or Air  
 Synthetic Lubricants  
 Tires  
 Trailer Access Packages  
     Trailer Connection Packages &  
 Accessory Options  
     Trailer Hook-Up Lamp  
 Transistorized Flashers  
 Transmission Cooler  
 VIP (V-MAC Info Center)  
 Vinyl Stripe Designs (Cab & Hood)  
 Windshield Wiper Options  
 Wheel Equipment:  
     Spoke, Steel or Aluminum Disc  
     Hub & Drum Equipment  
 Wheel Flaps (Black Poly Armor)  
 Wheel Seals

**OTHER COMPONENT OPTIONS  
 MAY BE AVAILABLE UPON REQUEST.**