

## STANDARD SPECIFICATIONS

(Based on Model CL713, 6x4 Tractor)  
Canadian orders require Engine Block Heaters.

### ENGINE: CUMMINS ISX 500 EPA02

Horsepower, 500 HP [373 kW] at 2000 Gov. RPM  
Peak Horsepower, 500 HP [373 kW] at 2000 RPM  
Max. Torque, 1650 lb/ft [2 657 N•m] at 1200 RPM  
V-MAC III—Total Vehicle Electronics  
Lube Oil System, Full Flow ESI +  
Extended Service Interval 25,000 Miles [40 233 km] Centri-Max®  
Centrifugal Oil Filter  
Flywheel Housing, Aluminum  
Silicone Hoses and Tubing on Engine  
Air Compressor, 14.0 cfm min. rtg. w/Air Governor  
Chassis Mounted  
Starting System Starter, 12-Volt  
Batteries, (3) Mack 12-Volt M/F Type, 760 CCA  
Total 2280 CCA with Kalas Cables  
Alternator, 12V 100A, Delco (22 SI)  
Air Intake System  
Air Cleaner, 11" [279 mm] Single Element  
Dry Type, Under Hood  
Air Intake from Both Sides of Hood  
Air Restriction Monitor, Grad. Lock Up Type (Air Intake Mtd.)  
Dual Exhaust, Vertical w/Muffler Heat Shield  
Cooling System—Shutterless Type  
Radiator, 1,334 sq in [8 605 cm<sup>2</sup>] Frontal Area  
Anti-Freeze to -10°F [-23°C]  
Fan Drive, On/Off  
Poly-V Fan Belt

### CLUTCH: EATON FULLER, CL7985

15.5" [394 mm] Ceramic Dampened Disc, 2-Plate, Coaxial Spring

### TRANSMISSION: MACK T-310M

Ratios: 17.35 Low-0.73 High  
Driveline: Meritor 176N HD Main & Meritor 17N HD Interaxle  
w/Coated Splines

### CAB: MACK CONVENTIONAL, CA67

Interior Features:

Basic: Contractor

Color: To be same as Exterior  
Ash Tray  
Cigar Lighter  
CB—5-way Binding Post  
Radio Accommodation Package  
Coat Hook  
Dispatch Box Mounted on Rear Panel  
Overhead Console Including:  
Location for Opt. Radio  
Bergstrom Blend Air HVAC with R134a Refrigerant  
Dome Light w/Self-Contained Switch  
Adjustable Steering Column—Tilt Only  
18" Steering Wheel, Two Spoke

Seats:

Driver's, Bostrom Talladega 915, Air Susp.  
(Mid-Back)  
Rider's Seat  
Seat Belts—Driver and Rider  
Lap & Shoulder w/Seat Belt Retractor  
Sun Visor—Both Side  
Floor Mats, Rubber w/Closed Cell Vinyl Nitrile Backing

# MACK

## CL703 SERIES

## CHASSIS



- Conventional Chassis
- Set-Back Front Axle
- 6-Wheel Tractor
- ABS (Anti-Lock Brake System)

The CL chassis is an axle-back conventional configuration revealing the modern appearance of today. Equipped with an exceptional roomy cab and offered with integrated sleepers and various aerodynamic components. The CL703 is suited for either highway or on-off highway service offering the choice of MACK's "Balanced Design" engine, transmission and rear carriers as well as offering components from other manufacturers. Either way the CL703 is designed to get the job done in comfort and style.

### STANDARD

**ENGINE:** CUMMINS ISX 500 EPA02  
500 HP [373 kW] Peak Horsepower

**TRANSMISSION:** MACK 310M  
10-Speed, Overgear

**FRONT AXLE:** MACK FAW16  
16,000 lb. [7 258 kg] Capacity

**REAR AXLE:** MACK SAL38R  
38,000 lb. [17 237 kg] Capacity  
Suspension: Air, MACK AL401



**STANDARD SPECIFICATIONS**

(Continued)

**CAB:** (continued)

## Interior Features: Operational

T.M.C. Recommended Instrument Panel  
Air Pressure Gauge  
Voltmeter  
Fuel Level Gauge  
Engine Oil Pressure Gauge  
Engine Coolant Temperature Gauge  
Low Air Pressure Indicator (Light and Buzzer)  
Speedometer/Trip Odometer, Electronic  
Tachometer w/Hourmeter, Electronic  
High Beam Indicator  
Parking Brake On Indicator  
Key Type Starting  
Engine Shutoff, Key-Type Control  
Courtesy Light Switch (Head & Clearance)  
Directional Signal

## Exterior Features:

Welded Steel Shell, Galvanized  
MACK Rust Preventative Procedures  
Vents (Screened)  
Fresh Air Inlet for Heater  
Cab Step RH—Two Step Aluminum Frame Mounted  
Safety Glass Windows  
Tinted Windshields, Side & Rear Glass  
Windshield Wipers—Two, Fixed Arm & Blade Type  
Wiper Motor (Electric), (1), Two Speed Intermittent  
Windshield Washers, Electric, Wiper Mtd. with  
5 qt. [4.7 L] Reservoir  
Mirrors, West Coast Bulldog Bright Finish, Includes  
8" Convex RH & LH w/Stainless Steel Arms &  
Brackets  
Headlamps—Halogen, 7" [178 mm] Round  
Daytime Running Lights  
Identification and Clearance Lamps (5)  
Side Markers—Lamps and Reflectors  
Front Turn Signals  
Transistorized Flasher  
Horns, Air, MACK Rectangular Single Trumpet &  
Electric, (Single Tone)  
Doors—Galvanized Steel with:  
Visibility Door with Roll-Up Tinted Windows  
Grab Handles (Stainless Steel), RH & LH Behind Door  
Cab Mounting: Trunnion Front, Air Suspended Rear

**HOOD & FENDERS: FIBERGLASS**

One Piece Fiberglass with Wheel Splash Aprons  
Tilts Forward 78° with Spring Assist  
Grille—Hood Mounted Bright Finish

**FRAME:**

WB—Wheelbase—174" [4 420 mm]  
LP—Load Platform—157" [3 988 mm]  
CA—Cab to Axle—100" [2 540 mm]  
AF—C/L Axles to End of Frame—57" [1 448 mm]  
Frame Rails—Steel—45° Rear Frame Rail Cutoff  
Cross Section—13.5" x 3.4" x .39" [342 x 86 x 10 mm]  
Section Modulus—25.2 in.<sup>3</sup> [413 cm<sup>3</sup>]  
RBM (per rail)—3,024,000 lb. in. [341 400 N•m]  
Crossmembers—Back to Back "C" Channel  
Bumper: Non-Metallic Flexible (Argent Color) Flush Mounted  
BBC—Bumper to Back of Cab—123.2" [3 129 mm]  
Towing: Clevis (2)

**FUEL TANKS:**

Aluminum, 25" [640 mm] Dia.  
Capacity/Location, 95 gal [360 L] LH & RH

**FRONT AXLE: MACK FAW16**

16,000 lb [7 258 kg] Capacity  
Brakes, "S" Cam 16.5" x 6" [419 x 152 mm] Meritor "Q-Plus"  
Brakes w/o Dust Shields  
Slack Adjusters—Automatic  
Suspension, MACK Taperleaf Spring with 12,000 lb [5 443 kg]  
Ground Load Rating  
Shock Absorbers  
Integral Power Steering (Master and Slave)  
Wheel Equipment, 22.5" x 8.25" Accuride 10 Hole, 11.25"  
Bolt Circle, Hub Piloted Steel Disc Wheels  
Wheel Seals—Oil  
Tires: 295/75R22.5 (singles)

**REAR AXLE: MACK SAL38R**

38,000 lb [17 237 kg] Capacity Axle  
Carrier—Malleable—CRDPC202/203  
Suspension—Mack 40,000 lb [18 100 kg] Capacity  
AL401 Air Suspension w/4 Shock Absorbers and  
Height Control Kit  
52" [1 321 mm] Axle Wheelbase  
Brakes—"S" Cam 16.5" x 7" [419 x 178 mm]  
Meritor "Q-Plus" Brakes w/o Dust Shields  
Slack Adjusters—Automatic  
Aux. Spring Brake Chambers,  
30/30 Double Diaphragm Type, Mechanical Spring  
Release; 2 Units  
Wheel Equipment, 22.5" x 8.25" Accuride 10 Hole, 11.25"  
Bolt Circle, Hub Piloted Steel Disc Wheels  
Wheel Seals—Oil  
Tires: 295/75R22.5 (duals)

**AIR/BRAKE:**

ABS (Anti-Lock Brake System)  
Dual Air Brake System  
Air Reservoirs Mounted below Battery Boxes  
Primary—Single Compartment, Air Reservoir—LH Side  
Supply/Secondary—Two Compartment, Air Reservoir—RH Side  
Capacity—4,636 in<sup>3</sup> [76 L]  
Air Dryer—Heated  
Semi-Trailer Connection Package  
Air Brake Grouping  
Chassis Mtd. Pogo Stick  
12-ft Air Hose (2)  
Glad Hand (2)  
Glad Hand Storage Bracket  
(B.O.C.—LH Ground Reachable)  
Breakaway Safety Valve  
Hand Control Valve for Trailer Brakes  
Electric Grouping  
12-ft (7-Wire) Cord  
7-Wire Plugs

**ELECTRICAL:**

(2) Steel Battery Box with Unpainted Aluminum Cover Mtd.  
Forward of LH & RH Fuel Tanks  
Chassis Electrical  
Negative Ground  
12-Volt Electrical Circuits and Bulbs  
Fuse Protected Circuits  
Breaker Protected Headlamp & Windshield Wiper Circuits  
Rear Lighting, (2) Combination Stop, Tail Directional &  
Back-up Lights  
Trailer Electrical Package for Doubles Operation

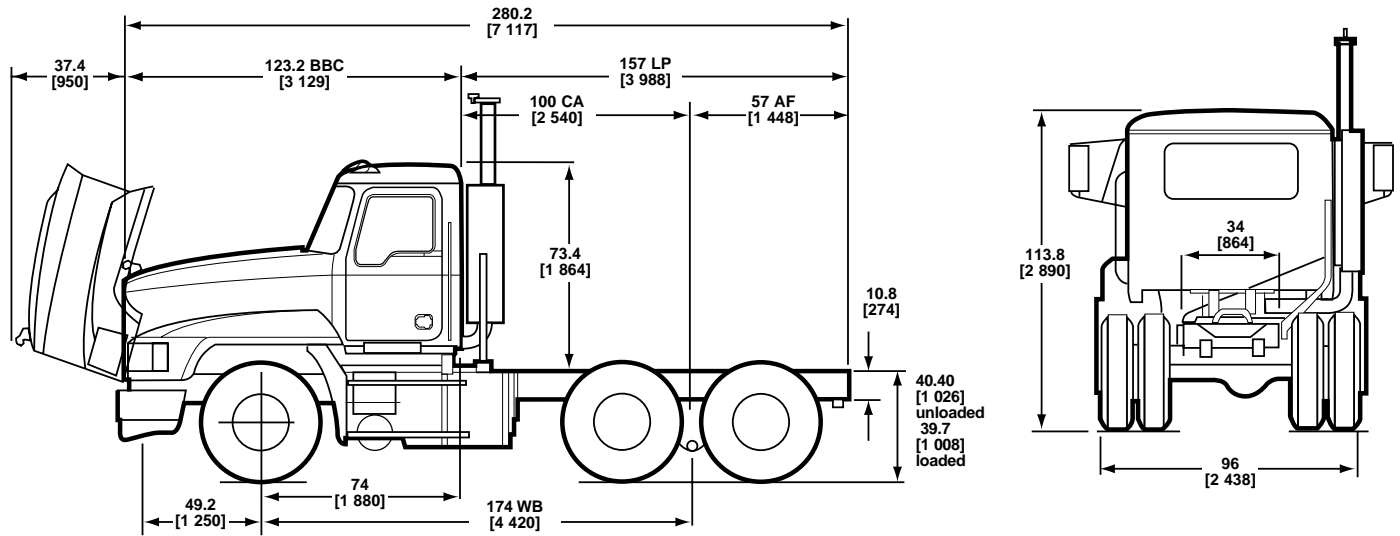
**PAINT:**

Cab, Hood and Fenders  
Color: MACK White, High Gloss  
Chassis Running Gear  
Color: MACK Black (Urethane)

**WEIGHT:**

Front: 9,692  
Rear: 6,480  
TOTAL: 16,172

## CHASSIS SPECIFICATIONS



## AVAILABLE DRIVELINE COMPONENTS

| TRANSMISSIONS |        |                   |
|---------------|--------|-------------------|
| MODEL         | SPEEDS | RATIOS (LOW/HIGH) |
| <b>MACK</b>   |        |                   |
| T310M         | 10     | 17.35/0.73        |
| T310ME        | 10     | 17.35/0.73        |
| T310ML        | 10     | 27.31/0.71        |
| T313 L        | 13     | 16.42/0.71        |
| T313LR        | 13     | 16.42/0.71        |
| T318L         | 18     | 16.42/0.71        |
| T318LR        | 18     | 16.42/0.71        |
| <b>FULLER</b> |        |                   |
| RTXF-16709B   | 9      | 12.46/0.73        |
| RTXF-16709H   | 9      |                   |
| FROF-16210B   | 10     | 11.06/0.75        |
| RTOF-16908LL  | 10     | 14.56/0.74        |
| FROF-16210C   | 10     | 12.69/0.74        |
| RTLOF-16913A  | 13     | 12.31/0.73        |
| RTOF-16915    | 15     | 13.29/0.79        |
| RTLOF-16918B  | 18     | 14.40/0.73        |
| FROF17210C    | 10     | 12.94/0.74        |
| FROF18210C    | 10     | 12.94/0.74        |
| RTLOF18913A   | 13     | 12.31/0.73        |
| RTLOF18918B   | 18     | 14.40/0.73        |
| RTLOF20918B   | 18     | 14.40/0.73        |

| AUXILIARY TRANSMISSIONS                  |        |                   |
|--|--------|-------------------|
| MODEL                                    | SPEEDS | RATIOS (LOW/HIGH) |
| <b>FULLER</b>                            |        |                   |
| AT1202A(Air Shift)                       | 2      | 2.036/1.00        |
| <b>SPICER</b>                            |        |                   |
| ATO-1000-4C (Manual Shift w/Power Tower) | 4      | 2.37/0.812        |
| AMO-1000-4C (Manual Shift)               | 4      | 2.37/0.812        |

| ENGINES   |  |  |
|---|--|--|
| MODEL   |  |  |
| CUMMINS   |  |  |
| ISX 565 @ 1850 ft.lb. EPA02                     |  |  |
| ISX 530 @ 1850 ft.lb. EPA02                     |  |  |
| ISX 500 @ 1650 ft.lb. EPA02                     |  |  |
| ISX 500 @ 1850 ft.lb. EPA02                     |  |  |
| ISX 500 @ 1650/1850 ft.lb. (Smart Torque) EPA02 |  |  |

| AXLES                               |             |                                |
|-------------------------------------|-------------|--------------------------------|
| CAPACITY                            | MAKE        | MODEL                          |
| <b>FRONT AXLES</b>                  |             |                                |
| 14,600 lb [6 622 kg]                | MERITOR     | FG943                          |
| 16,000 lb [7 258 kg]                | MACK        | FAW 16                         |
| 20,000 lb. [9 072 kg.]              | MACK        | FAW 20                         |
| <b>TANDEM REAR AXLES/SUSPENSION</b> |             |                                |
| 34,000 lb. [15 422 kg]              | MACK        | S34R                           |
| 38,000 LB. [17 237 kg]              | MACK        | S38R SB38R                     |
|                                     | MACK        | SB38R                          |
|                                     | DANA SPICER | DS405(P)                       |
| 40,000 lb. [18 414 kg]              | MERITOR     | RT40-145                       |
|                                     | MACK        | S440                           |
| 44,000 lb. [19 9568 kg]             | MACK        | S462                           |
|                                     | DANA SPICER | DS462P                         |
|                                     | MERITOR     | RT46-160/ RT46-164EH/ 46-16HEH |
| 46,000 lb. [20 866 kg]              | MACK        | S501                           |
| 50,000 lb. [22 680 kg]              | MACK        | S582                           |
| 58,000 lb. [26 309 kg]              | MACK        | S652                           |
| 65,000 lb. [29 484 kg]              | MACK        | S652                           |

**OPTIONAL EQUIPMENT****FRAME:****Standard Frame w/ Optional Reinforcement**

.24 [6 mm] Steel Inside Channel Reinforcement  
Section Modulus: 30.90 in.<sup>3</sup> [285 cm<sup>3</sup>]  
Resisting Bending Moment, RBM: 4,184,400 lbs. in. [472 300 N•m]

**Wheelbase Availability**

169" [4 280 mm] to 281" [7 137 mm]

**CAB, INTERIOR TRIM LEVELS:**

"**Contractor**": For complete description, refer to Price Book or MackTraq

"**Custom**": For complete description, refer to Price Book or MackTraq

"**Premier**": For complete description, refer to Price Book or MackTraq

**AERO AIDS:**

**Roof Fairing**  
**Side Shields**

**OTHER OPTIONAL EQUIPMENT:**

|                             |   |   |
|-----------------------------|---|---|
| Air Compressor Options      | Electrical Connections, Waterproofed Electrical:      | Tires   |
| Air Dryer Options           | Starter Options                                       | Tow Hooks, Rear                                 |
| Air Horns                   | Alternator Options                                    | Trailer Access Packages                         |
| Air Reservoirs, Aluminum    | Engine Brake  | Trailer Connection Packages & Accessory Options |
| Anti-Sway Rear Springs      | Engine Cold Starting Aids                             | Trailer Hook-Up Lamp                            |
| Auxiliary Transmission      | Engine Heaters  | Transistorized Flashers                         |
| Back-Up Alarm               | Exhaust, Dual Vertical                                | Transmission Cooler                             |
| Battery Options             | Fifth Wheels and Related Equipment                    | Trunnion Bushing Options                        |
| Battery Box Cover, Aluminum | Fog/Driving Lights                                    | Vinyl Stripe Designs (Cab & Hood)               |
| Battery Disconnect Switch   | Frame Rail Clearances                                 | Windshield Wipers                               |
| Brake Equipment Options     | Fuel Heaters  | Wheel Equipment:                                |
| Bright Finish Equipment:    | Fuel System, Dual Draw                                | Spoke, Steel or Aluminum Disc                   |
| Air Reservoirs              | Fuel/Water Separators                                 | Hub & Drum Equipment                            |
| Battery Box Cover           | Gauge Cluster Options                                 | Wheel Flaps                                     |
| Bumper                      | Headlamp Options                                      | Wheel Seals                                     |
| Exhaust Systems             | Hubodometer   |   |
| Fuel Tanks                  | Increased Air Capacity                                |   |
| Mirrors and Brackets        | Interwheel Power Divider                              |   |
| Steps                       | Inversion Valve, Spring Brakes                        |   |
| Wheels, Disc                | Mirror Options  |   |
| Wheel Nuts                  | Paint Designs (Cab & Hood)                            |   |
| Bug Screen                  | Power Divider Lockout                                 |   |
| Bumper Options              | Power Take-Off Options & Clearances                   |   |
| CB Radio Options            | Power Windows and Door Locks                          |   |
| Cab Accessories             | Radio Options, Stereo/Cassette/CD                     | OTHER COMPONENT OPTIONS                         |
| Cellular Phone              | Rear Axle Carrier Options                             | MAY BE AVAILABLE UPON REQUEST.                  |
| Chassis Keyed Alike         | Seat Options, Driver & Rider                          |   |
| Clutch, Self-Adjusting      | Sliding Rear Window                                   |   |
| Coolant Protection to -40°F | Sun Visor Exterior                                    |   |
| Crossmember Options         | Suspension, Rear Axle: Air, Multileaf, or Hendrickson |   |
| Drain Valve, Automatic      | Synthetic Lubricants                                  |   |
| Driveline, Increased Size   | Tandem Axle Optional Spacing                          |   |
| Dust Proofing               |   |   |
| Electrical Circuit Breakers |   |   |