

STANDARD SPECIFICATIONS

(Based on Model CX612 4x2 Tractor)
Canadian orders require Engine Block Heaters.

ENGINE: AC-310/330 ASET

Horsepower, 310 HP [231 kW] at 1800 Gov. RPM
Peak Horsepower, 330 HP [246 kW] at 1500 RPM
Max. Torque, 1360 lb/ft [1 844 N•m] at 1100 RPM
V-MAC III—Total Vehicle Electronics
Lube Oil System, Full Flow ESI +
Centri-Max® Ultra
Centrifugal Oil Filter
Flywheel Housing, Aluminum
Silicone Hoses and Tubing on Engine
Air Compressor, Chassis Mounted 18.7 cfm min. rtg. w/
Air Governor
Starting System
Starter, 12-Volt 39MT Type 500
Batteries, (3) Mack 12-Volt M/F Type, 650 CCA
Total 1950 CCA with Kalas Cables
Alternator, 12V 100A, Delco (24 SI)
Air Intake System
Air Cleaner, 11" [279 mm] Single Element
Dry Type, Under Hood
Air Intake from Both Sides of Hood
Air Restriction Monitor, Grad. Lock Up Type(Air Intake Mtd.)
Exhaust, Vertical w/ Muffler Heat Shield
Cooling System—Shutterless Type
Aluminum Radiator
Anti-Freeze to -10°F [-23°C]
Fan Drive, Electronically Modulated Type
w/Lightweight Plastic Fan
Poly-V Fan Belt w/Automatic Tensioner
Coolant Recovery Tank—6 Quart [5.7L]
PowerLeash Engine Brake

CLUTCH: EATON FULLER, CL798

15.5" [394 mm] Ceramic Dampened Disc, 2-Plate, Coaxial Spring

TRANSMISSION: FULLER, FRO-13210C

10-Speed, Ratios: 12.69 Low—0.74 High
Driveline: Meritor 17N HD w/Coated Splines

CAB: CONVENTIONAL, CA65

Interior Features:

Basic: Trim Level; Color: Select Pewter Gray
Ash Tray
Cigar Lighter
CB—5-way Binding Post
Coat Hook
Dispatch Box
Overhead Console
Radio Accomodations
Air Conditioner w/Integral Heater with R134a Refrigerant
Dome Light w/Self-Contained Swtich "On" when Driver or
Rider Side Door is Open
Door Mounted Courtesy Lamp, "On" when Driver or
Rider Side Door is Open
Steering Wheel, 18" Dia. 2-Spoke Soft Feel
Tilt & Telescope Steering Column

Seats:

Driver's, Bostrom Talladegha 915 (Mid-Back)
Rider's, MACK Non-Suspension (Mid-Back)
Seat Belts—Driver's and Rider's
Lap & Shoulder w/Seat Belt Retractor & "Komfort Latch"
Sun Visor—Left Side
Floor Mats, Rubber w/Closed Cell Vinyl Nitrile Backing

MACK

CXN602 SERIES

CHASSIS



- Conventional Chassis
- Set-Back Front Axle
- 4-Wheel Tractor

The MACK CXN602 is for fleet owner and owner-operator alike, a total chassis optimized through computer-aided design for an excellent strength-to-weight ratio. The cab incorporates exceptional room and comfort with the highest standards of fit and finish. The cab ride is an innovative cab air suspension, for unsurpassed smoothness and comfort. The axle-back configuration contributes to handling ease, while the quiet roomy interior caters to the driver's every need.

STANDARD

ENGINE: MACK AC-310/330 ASET
330 HP [246 kW] Peak Horsepower

TRANSMISSION: FULLER, FRO-13210C
10-Speed

FRONT AXLE: MACK FXL12
12,000 lb. [5 443 kg] Capacity

REAR AXLE: MERITOR RS-23-161
23,000 lb. [10 433 kg] Capacity
Suspension: Multileaf Spring



Mack Trucks, Inc., Allentown, Pennsylvania

STANDARD SPECIFICATIONS

(Continued)

CAB: continued

Interior Features: Operational:

- T.M.C. Recommended Instrument Panel
- Air Pressure Gauge
- Voltmeter
- Fuel Level Gauge
- Engine Oil Pressure Gauge
- Engine Coolant Temperature Gauge
- Low Air Pressure Indicator (Light and Buzzer)
- Speedometer/Trip Odometer, Electronic
- Tachometer w/Hourmeter, Electronic
- High Beam Indicator
- Parking Brake On Indicator
- Key Type Starting
- Hand Throttle Control
- Engine Shutoff, Key-Type Control
- Courtesy Light Switch (Head & Clearance)
- Directional Signal Switch

Exterior Features:

- Welded Steel Shell, Galvanized
- MACK Rust Preventative Procedures
- Safety Glass Windows
- Tinted Windshields, Side and Rear Windows
- Conspicuity Treatment, Back of Cab
- Windshield Wipers—Dual Actuated Arms, Cowl Mtd.
- Wiper Motor Two Speed Electric with Intermittent Feature
- Windshield Washers, Electric, Wiper Arm Mtd. with Reservoir Mounted Under Hood
- Mirrors, West Coast Type Aero Mirror
- Headlamps—Flush Mounted Halogen—Single Rectangular w/Lexan Lens (Replaceable Bulb) Bezel—Bright Finish (molded plastic)
- Daytime Running Lights
- Identification and Clearance Lamps (5)
- Side Markers—Lamps and Reflectors
- Front Integral Turn Signals with Fender
- Transistorized Flasher
- Horns, (1) MACK Rectangular Single Trumpet Air Horn, Electric, (Single Tone)
- Doors—Galvanized Steel with:
 - Visibility Door with Roll-Up Tinted Windows
- Grab Handles (Slip Resistant) RH & LH Behind Door
- Cab Mounting:
 - Two Mounting Brackets at Front
 - Air Isolation at Rear

HOOD & FENDERS: FIBERGLASS

- SMC (Sheet Molding Compound)
- Fiberglass with Wheel Splash Aprons
- Tilts Forward 75° with Spring Assist
- Grille—Hood Mounted Bright Finish Bars with Bright Finish Surround

FRAME:

- WB—Wheelbase—138" [3 500 mm]
- LP—Load Platform— 117" [2 972 mm]
- CA—Cab to Axle—76.3" [1 937 mm]
- AF—C/L Axles to End of Frame—41" [1 041 mm]
- Frame Rails—Steel
- Cross Section—10.47" x 3.54" x .24" [266 x 90 x 6 mm]
- Section Modulus—11.52 in.³ [189 cm³]
- RBM (per rail) —1,390,000 lb. in. [158 000 N•m]
- Tapered and Flanged—28° Rail Ends
- Bumper: Non-Metallic Flexible Flush Mounting
- BBC—Bumper to Back of Cab—113.4" [2 880 mm]
- Towing: Clevis (2)
- Fifth Wheel: Fontaine SL3ASB Air Slide

FUEL TANKS:

- Aluminum, 26" [640 mm] Dia.
- Capacity/Location, 72 gal [360 L] LH & RH

FRONT AXLE: MACK FXL12

- Set Back Front Axle
- 12,000 lb [5 443 kg] Capacity
- Brakes, "S" Cam 15" x 4" [381 x 102 mm]
 - Meritor "Q-Plus" Brakes w/o Dust Shields
 - Slack Adjusters—Automatic
- Suspension, MACK Taperleaf Spring (2 Leaf) with 12,000 lb [5443 kg] Ground Load Rating
- Shock Absorbers
- Integral Power Steering
- Wheel Equipment, 22.5" x 8.25" 10 Hole Hub Piloted Aluminum Disc Wheels
- Wheel Seals—Oil
- Tires: 295/75R22.5 (singles)

REAR AXLE: MERITOR RS-23-161

- 23,000 lb [10 433 kg] Capacity Axle
- Carrier—Malleable
- Suspension—Mack 23,000 lb [10 433 kg] Capacity Air Suspension
- Brakes—"S" Cam 16.5" x 7" [419 x 178 mm]
 - Meritor "Q-Plus" Brakes w/o Dust Shields
 - Slack Adjusters—Automatic
 - Aux. Spring Brake Chambers, 30/30 Double Diaphragm Type, Mechanical Spring Release 2 Units
- Wheel Equipment, 22.5" x 8.25" 10 Hole Hub Piloted Aluminum Disc Wheels
- Wheel Seals—Oil
- Tires: 295/75R22.5 (duals)

AIR/BRAKE:

- ABS (Anti-Lock Brake System)
- Dual Air Brake System
- Air Reservoirs—
 - Two Steel, Horizontal Mtd. on RH Rail Forward of Fuel Tank, Primary—Single Compartment Tank, Supply/Secondary—Two Compartment
- Capacity—5,600 in³ [92 L]
- Air Dryer—Heated
- Semi-Trailer Connection Package
 - Air Brake Grouping
 - Chassis Mtd. Pogo Stick
 - 12-ft Air Hose (2)
 - Glad Hand (2)
 - Glad Hand Storage Bracket (B.O.C.—LH Ground Reachable)
- Breakaway Safety Valve
- Hand Control Valve for Trailer Brakes
- Electric Grouping
 - 12-ft (7-Wire) Cord
 - 7-Wire Plugs

ELECTRICAL:

- Steel Battery Box with Molded Plastic Cover Mtd. Forward of LH Fuel Tank
- Chassis Electrical
 - Negative Ground
 - 12-Volt Electrical Circuits and Bulbs
 - Fuse Protected Circuits
 - Breaker Protected Headlamp & Windshield Wiper Circuits
 - Rear Lighting, (2) Combination Stop, Tail Directional & Back-up Lights
- Trailer Electrical Package for Doubles Operation

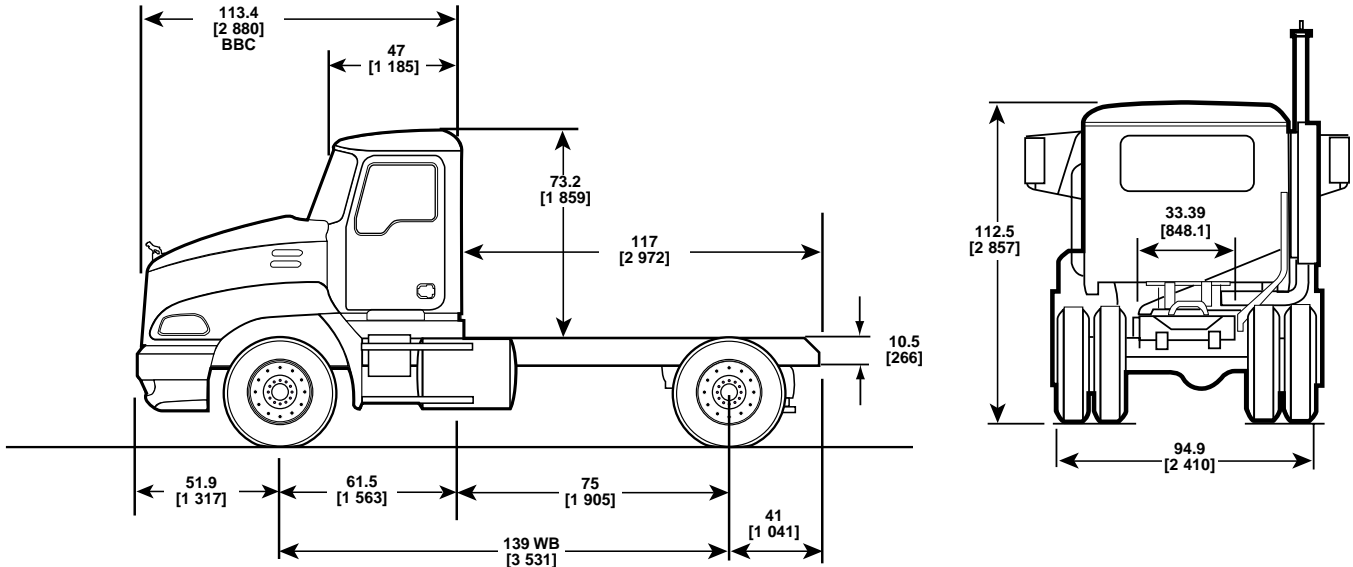
PAINT:

- Cab, Hood and Fenders
 - Color: MACK White, High Gloss Urethane
- Chassis Running Gear
 - Color: MACK Black (Urethane)

WEIGHT:

- Front: 8,040
- Rear: 3,567
- TOTAL: 11,607

CHASSIS SPECIFICATIONS



AVAILABLE DRIVE LINE COMPONENTS

TRANSMISSIONS		
MODEL	SPEEDS	RATIOS (LOW/HIGH)
MACK		
T309	9	11.40/0.71
T309(L)	9	13.93/0.71
T309(LR)	9	13.93/0.71
T310	10	13.81/0.73
T310M	10	17.35/0.73
T310ME	10	17.35/0.73
T313LR	13	16.42/0.71
T313 L	3	16.42/0.71
T318LR	18	16.42/0.71
T318L	18	16.42/0.71
T318L21	18	16.42/0.71
ALLISON		
4000 HS	5	3.51/0.74
4000 HS	6	3.51/0.64
4500 HS	5	4.70/0.76
4500 HS	6	4.70/0.67
FULLER		
RTX-13609B	9	12.57/0.73
RTX-14609B	9	12.57/0.73
RTX-16709B	9	12.46/0.73
FR-13210B	10	14.80/1.00
FR-14210B	10	14.80/1.00
FRO-13210B	10	11.06/0.75
FRO-13210C	10	12.69/0.74
FRO-14210B	10	11.06/0.75
FRO-14210C	10	12.69/0.74
FRO-15210B	10	11.06/0.75
FRO-15210C	10	12.69/0.74
FRO-16210B	10	11.06/0.75
FRO-16210C	10	12.69/0.74
RTO-14908LL	10	14.56/0.74
RTO-16908LL	10	14.56/0.74
RTO-16909ALL	11	26.08/0.73
RTLO-14913A	13	12.31/0.73
RTLO-16913A	13	12.31/0.73
RT-14915	15	16.94/1.00
RTO-14915	15	13.29/0.79
RTO-16915	15	13.29/0.79
RTLO-14918B	18	14.40/0.73
RTLO-16918B	18	14.40/0.73
FULLER LIGHTNING TOP 2		
FRLO-14410C-T2	10	12.66/0.74
FRLO-15410C-T2	10	12.66/0.74
FRLO-16410C-T2	10	12.66/0.74

ENGINES			
MODE	*HORSEPOWER @ GOV'D. RPM	MODEL	*HORSEPOWER @ GOV'D. RPM
MACK—ASET CEGR			
AC-310/330	310 HP [231 kW] @ 1800 330 HP [246 kW] @ 1400-1500	AC-400	400 HP [298 kW] @ 1800 400 HP [298 kW] @ 1500-1800
AC-330/350	330 HP [246 kW] @ 1800 350 HP [261 kW] @ 1400-1500	AC-427	427 HP [318 kW] @ 1800 427 HP [318 kW] @ 1600-1800
AC-355/380	355 HP [265 kW] @ 1800 380 HP [284 kW] @ 1400-1500	AC-460P	460 HP [343 kW] @ 1850 487 HP [363 kW] @ 1600-1700
AC-380/410	380 HP [238 kW] @ 1800 410 HP [305 kW] @ 1400-1500	AC-460E (ECONOMY)	460 HP [343 kW] @ 1800 460 HP [343 kW] @ 1600-1800
AC-350	350 HP [261 kW] @ 1800 350 HP [261 kW] @ 1500		

TRANSMISSIONS (Continued)					
MODEL	SPEEDS	RATIOS (LOW/HIGH)	MODEL	SPEEDS	RATIOS (LOW/HIGH)
FULLER LIGHTNING W/O TOP 2					
FRLO-14410C	10	12.66/0.74	FRLO-16410C	10	12.66/0.74
FRLO-15410C	10	12.66/0.74			
GENERATION II—FULLER AUTO SHIFT					
RTO-14910B-AS2	10	10.96/0.74	RTO-16910C-AS2	10	12.80/0.73
RTO-16910B-AS2	10	10.96/0.74	RTLO-14918C-AS2	18	12.19/0.73
RTO-14910C-AS2	10	12.80/0.73	RTLO-16918C-AS2	18	19/0.73
GENERATION II—FULLER ULTRA SHIFT					
RTO-14910B-DM2	10	10.96/0.74	RTO-16910B-DM2	10	10.96/0.74
MERITOR					
M-14G10A-M14	10	15.02/1.00	MO-13G10C-M13	10	12.72/0.73
M-15G10A-M15	10	15.02/1.00	MO-14G10A-M14	10	11.19/0.74
MO-11G10A-M11	10	11.19/0.74	MO-14G10C-M14	10	12.72/0.73
MO-11G10C-M11	10	12.72/0.73	MO-15G10A-M15	10	11.19/0.74
MO-13G10A-M13	10	11.19/0.74	MO-15G10C-M15	10	12.72/0.73

AXLES					
CAPACITY	MAKE	MODEL	CAPACITY	MAKE	MODEL
FRONT AXLES			SINGLE REAR AXLES		
12,000 lb. [5 443 kg]	MACK	FXL 12	23,000 lb. [10 433 kg]	MACK	RA23R
	DANA SPICER	E12021		DANA SPICER	23105S
	MERITOR	FF961 or FF981		MERITOR	RS-23-161/186
14,600 lb [6 623 kg]	MACK	FXL 14.6			

OPTIONAL EQUIPMENT

FRAME:

Optional Frame Rails

Rail Dimensions: 10.47" x 3.54" x .28" [266 x 90 x 7 mm]
Section Modulus: 13.3 in.³ [217.9 cm³]
Resisting Bending Moment, RBM: 1,600,000 lbs. in. [180 000 N•m]

Rail Dimensions: 10.47" x 3.54" x .31" [266 x 90 x 8 mm]
Section Modulus: 15.0 in.³ [245.8 cm³]
Resisting Bending Moment, RBM: 1,810,000 lbs. in. [203 000 N•m]

Wheelbase Availability

138" [3 505 mm] to 238" [6 045 mm]

CAB, INTERIOR TRIM LEVELS:

Trim Level I - Select: Pewter Gray Interior; Dark Fieldstone (Day Cab Only)

Trim Level II - Premium: Garnet Red, Glacier Blue, Desert Sand or Dark Fieldstone Interiors available; Graphite Gray (N/A with Sleepers)
(Color is accent on base gray background)

Trim Level III - Elite: Garnet Red, Glacier Blue, Desert Sand or Dark Field Stone Interiors available. Features Ultra Leather Custom Pad Fabric Headliner.

SLEEPER BOXES: Interior Color Matches that of the Cab Interior; Sleeper Box Integral with Cab Mounting

- 48" [1 219 mm] Flat Top
- 56" [1 423 mm] Flat Top
- 60" [1 524 mm] Mid Rise
- 70" [1 778 mm] Mid Rise
- 70" [1 778 mm] High Rise

AERO AIDS:

- Roof Fairing
- Side Shields
- Roof Air Reflector

OTHER OPTIONAL EQUIPMENT:

- Air Compressor Options
- Air Dryer Options
- Air Horns
- Air Reservoirs, Aluminum
- Back-Up Alarm
- Battery Box Cover, Aluminum
- Battery Disconnect Switch
- Battery Options
- Brake Equipment Options
- Bright Finish Equipment:
 - Air Reservoirs
 - Battery Box Cover
 - Bumper
 - Exhaust Systems
 - Fuel Tanks
 - Mirrors and Brackets
 - Steps
 - Wheels, Disc
 - Bug Screen
- Bumper—Stainless Steel, Clad Aluminum, Painted Steel
- CB Radio Options
- Cab Accessories
- Chassis Keyed Alike
- Clutch, Self-Adjusting
- Coolant Protection to -40°F
- Crossmember Options
- Drain Valve, Automatic
- Driveline, Increased Size
- Electrical Circuit Breaker

- Electrical:
 - Starter Options
 - Alternator Options
- Engine Brake
- Engine Cold Starting Aids
- Engine Heaters
- Exhaust, Dual Vertical
- Fifth Wheels and Related Equipment
- Fog/Driving Lights
- Fuel Heaters
- Fuel System:
 - Fast Fill & Accessory Options
 - Dual Draw
- Fuel/Water Separators
- Gauge Cluster Options:
 - Air Application
 - Axle Oil Temperature
 - Engine Oil Temperature
 - Exhaust Pyrometer
 - Manifold Pressure
 - Transmission Oil Temperature
- Hubodometer
- Inside/Outside Air Intake
- Interwheel Power Divider
- Inversion Valve, Spring Brakes
- Mirror Options
- Paint Designs (Cab & Hood)
- Power Take-Off Options & Clearances
- Power Windows and Door Locks
- Quarter Fenders

- Radio Options, Stereo/Cassette/CD
- Rear Axle Carrier Options
- Seat Options, Driver & Rider
- Sleeper Box Interior Options
- Sun Visor, Exterior
- Suspension, Rear Axle: Multileaf or Air
- Synthetic Lubricants
- Tires
- Trailer Access Packages
 - Trailer Connection Packages & Accessory Options
 - Trailer Hook-Up Lamp
- Transistorized Flashers
- Transmission Cooler
- VIP (Vehicle Information Profiler)
- Vinyl Stripe Designs (Cab & Hood)
- Wheel Equipment:
 - Spoke, Steel or Aluminum Disc
 - Hub & Drum Equipment
- Wheel Seals

**OTHER COMPONENT OPTIONS
MAY BE AVAILABLE UPON REQUEST.**

The information in this brochure was accurate as known as of the date of the publication. Illustrations may not be representative of current product. Mack Trucks, Inc. reserves the right to make changes in specifications, equipment or design, or to discontinue models or options without notice at any time.