

## STANDARD SPECIFICATIONS

(Based on Model MR690P 4x2 Truck)

### ENGINE: MACK, AMI-300 ASET

Horsepower, 300 HP [224 kW] at 2100 Gov. RPM  
Peak Horsepower, 325 HP [243 kW] at 1700-1900 RPM  
Max. Torque, 1200 lb/ft [1 627 N•m] at 1300 RPM  
V-MAC III—Total Vehicle Electronics  
Lube Oil System, Full Flow ESI  
Centri-Max® Ultra Centrifugal Oil Filter  
Flywheel Housing, Aluminum  
Silicone Hoses and Tubing on Engine  
Air Compressor, 13.2 (TF 550) cfm min. rtg.  
Starting System Starter, 12-Volt  
Batteries, (3) Mack 12-Volt M/F Type, 1950 CCA each  
Alternator, 12V 100A, Delco (22 SI)  
Air Intake System  
Air Cleaner, 13" [330 mm] Single Element  
Dry Type, Behind Cab Snorkel  
Air Restriction Monitor, Grad. Lock Up Type  
(Air Intake Mtd.)  
Exhaust, Vertical w/Rain Cap  
Cooling System—Shutterless Type  
Radiator, 1,050 sq in [6 775 cm<sup>2</sup>] Frontal Area  
Anti-Freeze to -10°F [-23°C]  
Fan Drive, On-Off  
Poly-V Fan Belt with Automatic Tensioner  
PowerLeash Engine Brake

### CLUTCH: EATON FULLER, CL7981

15.5" [394 mm] Ceramic Dampened Disc,  
2-Plate, Coaxial Spring

### TRANSMISSION: MACK, TM-308

6-Speed, Ratios: 17.77 Low–0.71 High  
PTO Side Gears (RH & LH)  
Driveline: Meritor 17N HD w/Coated Splines

### CAB: CA531, LOW COE

Interior Features:

Basic: Color: Same as Exterior Paint

Ash Tray  
Cigar Lighter  
CB—5-way Binding Post  
Coat Hook  
Glove Box  
Heater with Integral Defroster  
Dome Light w/Self-Contained Switch  
Fixed Steering Column  
Seats:

Driver's, Bostrom Talladegha 905,  
Air Susp. (Mid-Back)

Rider's, Fixed MACK Non-Suspension (Mid-Back)

Seat Belts—Driver's and Rider's

Lap & Shoulder w/Seat Belt Retractor

Sun Visor—LH & RH

Floor Mats, Rubber w/Closed Cell Vinyl Nitrile Backing

Interior Features: Operational

T.M.C. Recommended Instrument Panel

Air Pressure Gauge—Dual

Voltmeter

Fuel Level Gauge

Engine Oil Pressure Gauge

# MACK

## MR600P SERIES

## CHASSIS



- Low COE 4-Wheel Truck
- Maneuverability
- Panoramic View
- Tight Wheel Cuts

The low-profile cabover "MR" was created specifically for the severe service refuse industry, however, it is also popular in other applications such as concrete pumper, mixer/dumper and other construction equipment. Its short bumper back-to-back of cab dimension and set-back front axle permit effective weight distribution for on and off-road hauling. The steel cab is fully galvanized. The fiberglass doors and huge glass areas contribute to easy entry/exit and panoramic visibility. The "MR" is literally designed around the task.

### STANDARD

**ENGINE:** MACK AMI-300 ASET  
325 HP [243 kW] Peak Horsepower

**TRANSMISSION:** MACK TM-308  
8-Speed

**FRONT AXLE:** MACK FAW12  
12,000 lb. [5 443 kg] Capacity

**REAR AXLE:** MACK RA23R  
23,000 lb. [10 433 kg] Capacity  
Suspension: Multileaf Springs



Mack Trucks, Inc., Allentown, Pennsylvania

**STANDARD SPECIFICATIONS**

(Continued)

**CAB:** continued

Interior Features: Operational (continued)  
Engine Coolant Temperature Gauge  
Low Air Pressure Indicator (Light and Buzzer)  
Speedometer/Trip Odometer, Electronic  
Tachometer w/Hourmeter, Electronic  
High Beam Indicator  
Parking Brake On Indicator  
Key Type Starting  
Engine Shutoff, Key-Type Control  
Directional Signal Switch, Manual Cancelling  
Radio Accommodation Package

Exterior Features:  
Welded Steel Shell, Galvanized  
MACK Rust Preventative Procedures  
Composite Fenders for Chassis & Cab Section  
Safety Glass Windows  
Tinted Windshield  
Windshield Corner Wind Deflectors  
Windshield Wipers—Two, Pantograph Type  
Bottom Mounted  
Wiper Motor (Electric), (2), Two Speed  
Windshield Washers, Electric, Wiper Mtd. With  
7 qt. [6.6 L] Reservoir  
Mirrors, West Coast Bulldog Bright Finish,  
w/Stainless Bracing, RH & LH  
Headlamps—(2) Conventional Sealed Beam Type  
(7" [178 mm] Round)  
Daytime Running Lights  
Identification and Clearance Lamps (7)  
Side Markers—Lamps and Reflectors  
Front Turn Signals  
Transistorized Flasher  
Horns, Air, MACK Twin Trumpet Mtd. Under Cab &  
Electric, (Single Tone)  
Doors—Fiberglass with:  
Sliding Type Windows (Non-Tinted)  
Screened Vent in LH Door  
Peep Window in RH Door  
Grab Handles (Aluminum), RH & LH Behind Door  
Rear Cab Glass (Non-Tinted)  
Cab Mounting and Lift: Mounting 4-Point Fixed Type

**HOOD & FENDERS:**

Hydraulic Cab Lift, 60° Cab Tilt, Pump Mtd. on RH Fender  
12" [305 mm] Mud Flaps Mtd. on Front Fender

**FRAME:**

WB—Wheelbase—157" [3 988 mm]  
LP—Load Platform—249" [6 325 mm]  
CA—Cab to Axle—153.5" [3 899 mm]  
AF—C/L Axles to End of Frame—95.5" [2 462 mm]  
Frame Rails—Steel  
Cross Section—13.25" x 3.25" x .3125" [337 x 83 x 8 mm]  
Section Modulus—19.79 in<sup>3</sup> [324.3 cm<sup>3</sup>]  
RBM (per rail)—2,374,800 lb in [268 300 N•m]  
Bumper: Steel, Swept Back Channel, 92.6" x 11.25"  
[2 352 x 286 mm]  
Extended Mounting  
BBC—Bumper to Back of Cab—63" [1 600 mm]  
Towing: Pin

**FUEL TANKS:**

Steel, 24" [610 mm] Dia.  
Capacity/Location, 70 gal [265 L] RH

**FRONT AXLE: MACK, FAW12**

12,000 lb [5 443 kg] Capacity  
Brakes, "S" Cam 16.5" x 5" [419 x 127 mm]  
Meritor "Q-Plus" Brakes w/o Dust Shields  
Slack Adjusters—Automatic  
Suspension, MACK Multileaf Spring with 12,000 lb  
[5 443 kg] Ground Load Rating  
Integral Power Steering Ratio 16.6:1  
Wheel Equipment, 22.5" x 8.25" Accuride 10 Hole, 11.25"  
Bolt Circle, Hub Piloted Steel Disc Wheels  
Wheel Seals—Oil  
Tires: 11R22.5 (singles)

**REAR AXLE: MACK, RA23R**

23,000 lb [10 433 kg] Capacity Axle  
Carrier—Malleable—CRD203  
Suspension—Mack 23,000 lb [10 433 kg] Capacity  
Multileaf Springs  
Brakes—"S" Cam 16.5" x 7" [419 x 178 mm]  
Meritor "Q-Plus" Brakes w/o Dust Shields  
Slack Adjusters—Automatic  
Aux. Spring Brake Chambers,  
30/30 Double Diaphragm Type,  
Mechanical Spring Release; 2 Units,  
Wheel Equipment, 22.5" x 8.25" Accuride 10 Hole, 11.25"  
Bolt Circle, Hub Piloted Steel Disc Wheels  
Wheel Seals—Oil  
Tires: 11R22.5 (duals)

**AIR/BRAKE:**

ABS (Anti-Lock Brake System)  
Dual Air Brake System  
Air Dryer—Heated  
Air Reservoirs—  
Two, One Supply Tank and One Dual Tank Compartment  
Primary/Secondary Tank Mounted Behind  
Battery Box, Outboard LH Frame Rail  
Capacity—3,623 in<sup>3</sup> [59.4 L]

**ELECTRICAL:**

Painted Steel Battery Boxes & Covers  
Chassis Electrical  
Negative Ground  
12-Volt Electrical Circuits and Bulbs  
Fuse Protected Circuits  
Breaker Protected Headlamp & Windshield Wiper Circuits  
Rear Lighting, (2) Combination Stop, Tail Directional &  
Back-up Lights

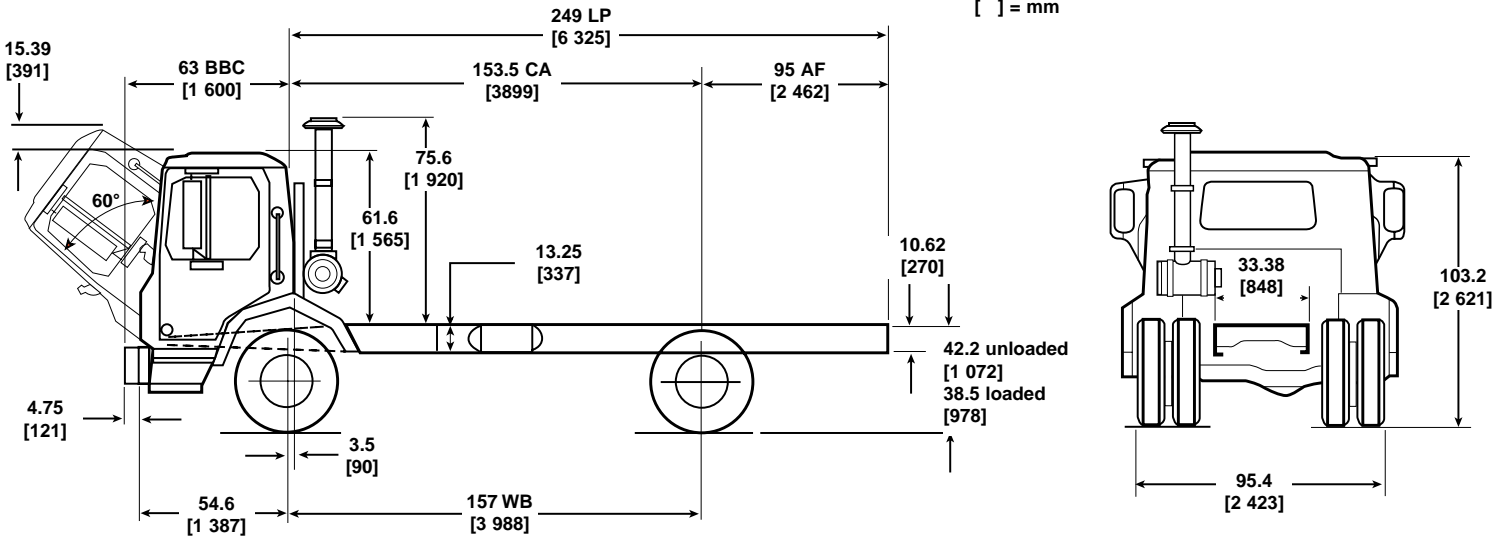
**PAINT:**

Cab, Hood and Fenders  
Color: MACK White, High Gloss  
Chassis Running Gear  
Color: MACK Black (Urethane)

**WEIGHT:**

Front: 10,108  
Rear: 3,724  
TOTAL: 13,832

## CHASSIS SPECIFICATIONS



## AVAILABLE DRIVELINE COMPONENTS

TRANSMISSIONS		
MODEL	SPEEDS	RATIOS (LOW/HIGH)
<b>MACK</b>		
TM308	8	17.77/0.71
TM308M	8	17.77/0.71
TM309	9	25.21/0.71
TM309M	9	25.21/0.71
T309	9	11.40/0.71
T309(L)	9	13.93/0.71
T309(LR)	9	13.93/0.71
T310M	10	17.35/0.73
T310ME	10	17.35/0.73
T310MLR	10	27.31/0.71
<b>ALLISON</b>		
4500 RDS	5	4.70/0.76
4500 RDS	6	4.70/0.67
4000 RDS	5	3.51/0.74
4000 RDS	6	3.51/0.64
4500 RDS R	5	4.70/0.76
4500 RDS R	6	4.70/0.67
4000 RDS R	5	3.51/0.74
4000 RDS R	6	3.51/0.64
<b>ALLISON—FOR FIRE PUMPER SERVICE</b>		
4000 EVS	5	3.51/0.74
4000 EVS	6	3.51/0.64

ENGINES	
MODEL	*HORSEPOWER @ GOV'D. RPM
<b>MACK</b>	
AMI-300 ASET IEGR	300 HP [224 kW] @ 2100 <i>325 HP [243 kW] @ 1700-1900</i>
AI-300A ASET IEGR	300 HP [224 kW] @ 1950 <i>325 HP [243 kW] @ 1700</i>
AMI-335 ASET IEGR	335 HP [250 kW] @ 2100 <i>365 HP [272 kW] @ 1700-1900</i>
AMI-370 ASET IEGR	370 HP [276 kW] @ 2100 <i>405 HP [302 kW] @ 1700-1900</i>
AI-350 ASET IEGR	350 HP [261 kW] @ 1950 <i>350 HP [261 kW] @ 1600-1950</i>
AI-400 ASET IEGR	400 HP [298 kW] @ 1950 <i>400 HP [298 kW] @ 1600-1950</i>

\*Italics = Peak horsepower other than gov'd. RPM

AXLES		
CAPACITY	MAKE	MODEL
<b>FRONT AXLES</b>		
12,000 lb. [5 443 kg]	MACK	FAW12
14,330 lb. [6 486 kg]	MACK	FAW14.3
14,600 lb. [6 623 kg]	MERITOR	FG941
18,000 lb. [8 165 kg]	MACK	FAW18
20,000 lb. [9 072 kg]	MACK	FAW20
<b>SINGLE REAR AXLES</b>		
23,000 lb. [10 433 kg]	MACK	RA23R
	MERITOR	RS23-186
30,000 lb. [13 608 kg]	MERITOR	RS30-185
	DANA SPICER	30105S/30055P

## OPTIONAL EQUIPMENT

### FRAME:

**OPTIONAL:** 13.37" [340 mm] x 3.25" [83 mm] x .375" [10 mm]  
RBM—2,818,800 lb. in. [318 500 N•m]  
Section Modulus—23.49 in.<sup>3</sup> [385 000 mm<sup>3</sup>]

**w/Reinforcement:**

9.93" [252 mm] x 2.87" [73 mm] x .25" [6 mm]  
RBM—3,530,400 lb. in. [399 200 N•m] (Combined Main Frame & Reinforcement)  
Section Modulus—29.42 in.<sup>3</sup> [482 000 mm<sup>3</sup>]

**Wheelbase Availability: MR600P** 4 x 2 Chassis 122" [3 099 mm] to 255" [6 477 mm]

### OTHER OPTIONAL EQUIPMENT:

Air Conditioner, Integral Comb Unit  
Air Dryers  
Air System, Increased Volume  
Alcohol Evaporation  
All Hose Chassis  
Aluminum Air Reserves  
Back-up Alarm  
Battery Disconnect Switch  
Body Power Cable  
Bright Finish Equipment:  
Battery Box Covers  
Bumper  
Vertical Exhaust Systems  
Front Wheel Nuts  
Grille  
Mirrors  
Bumper Options  
Cab Windshield Protector includes Anti-Skid  
Roof Surface  
Courtesy Light Switch  
Crossmembers, I-Beam Type or  
1/2" [13 mm] Plate Type  
Engine Brake  
Engine Cold Starting Aids  
Engine Heaters  
Engine Protection Shutdown System  
Exhaust, Vertical or Underframe  
Flasher, Transistorized  
1/4" Inside Frame Reinforcement

Fog and Driving Lamps  
Frame Extension, Front  
10" for Refuse Service  
Fuel Heaters/Water Separators  
Gauge Cluster Options:  
Air Restriction  
Ammeter  
Axle Oil Temperature  
Engine Hourmeter  
Engine Oil Temperature  
Exhaust Pyrometer  
Fuel Pressure  
Manifold Pressure  
Transmission Oil Temperature  
Hand Control Valve  
Hubodometer  
Interwheel Power Divider  
Mirror Options  
Mud Flaps  
Paint—Special Paint Designs  
Power Divider Lockout  
Power Take-Off Options:  
Front End PTO (Crankshaft Adapter)  
Lift Axle Mtg. Clearances  
Radio Options, Stereo/Cassette  
Seat Options, Driver & Rider  
Semi or Full Trailer Connections Package

Engine Skid Plate  
Sliding Rear Window  
Static Load Cushions, Front Axle  
Synthetic Lubricants  
Tandem Axle Spacing Options  
Trailer Hook-up Lamp  
Waterproof Electrical Connections  
Wheel Equipment:  
Spoke, Steel or Aluminum Disc  
Windows—Door, Roll-up or Sliding

OTHER COMPONENT OPTIONS  
MAY BE AVAILABLE UPON REQUEST