

## STANDARD SPECIFICATIONS

### ENGINE: MACK, AMI-300 ASET

Horsepower, 300 HP [224 kW] at 2100 Gov. RPM  
Peak Horsepower, 325 HP [242 kW] at 1700-1900 RPM  
Max. Torque, 1200 lb/ft [1 672 N•m] at 1300 RPM  
V-MAC III—Total Vehicle Electronics  
Lube Oil System, Full Flow ESI  
Extended Service Interval 16,000 Miles [25 749 km]  
Centri-Max® Centrifugal Oil Filter  
Silicone Hoses and Tubing on Engine  
Air Compressor, Meritor WABCO 318 (18.7 CFM)  
Starting System Starter, 12-Volt  
Batteries, (3) Mack 12-Volt M/F Type, 1950 CCA  
Alternator, 12V 100A, Delco (22 SI)  
Air Intake System  
Air Cleaner, Single Element—Dry Type  
Air Restriction Monitor, Grad. Lock Up Type  
(Air Cleaner Mtd.)  
Exhaust, Single Vertical Cab Mounted  
Cooling System—Shutterless Type  
Aluminum Radiator, 950 sq in Frontal Area  
Anti-Freeze to -10°F [-23°C]  
Fan Drive, Viscous  
Poly-V Fan Belt w/Auto. Tensioner

### CLUTCH: EATON FULLER CL7981

15.5" [394 mm] Ceramic Dampened Disc,  
2-Plate, Coaxial Spring

### TRANSMISSION: MACK, TM308

8-Speed, Ratios: 17.77 Low–0.71 High  
PTO Side Gears (RH & LH)  
Driveline: Meritor 17N HD Main and Meritor 17N HD  
Interaxle w/Coated Splines

### CAB: MACK CONVENTIONAL, CA67

Interior Features:

Basic: Contractor

Color: To be same as Exterior

Ash Tray

Cigar Lighter

CB—5-way Binding Post

Radio Accommodation Package

Coat Hook

Dispatch Box Mounted on Rear Panel

Overhead Console Including:

Location for Opt. Radio

Bergstrom Blend Air HVAC with R134a Refrigerant

Dome Light w/Self-Contained Switch

Adjustable Steering Column—Tilt Only

18" Steering Wheel, Two Spoke

Seats:

Driver's, Bostrom Talladega 915, Air Susp.  
(Mid-Back)

Rider's Seat

Seat Belts—Driver and Rider

Lap & Shoulder w/Seat Belt Retractor

Sun Visor—Both Side

Floor Mats, Rubber w/Closed Cell Vinyl Nitrile Backing

# MACK

## CV713 GRANITE



- Conventional Chassis
- Front Axle Forward
- 6-Wheel Truck
- ABS (Anti-Lock Brake System)

### STANDARD

**ENGINE:** MACK AMI-300 ASET  
325 HP [242 kW] Peak Horsepower

**TRANSMISSION:** MACK TM308  
8-Speed

**FRONT AXLE:** MACK FAW12  
12,000 lb. [5 443 kg] Capacity

**REAR AXLE:** MACK SS38R  
38,000 lb. [17 237 kg] Capacity  
Suspension: SS38 Mack Multileaf  
38,000 lb. Capacity



**STANDARD SPECIFICATIONS**

(Continued)

**CAB:** (continued)

## Interior Features: Operational

T.M.C. Recommended Instrument Panel  
Air Pressure Gauge  
Voltmeter  
Fuel Level Gauge  
Engine Oil Pressure Gauge  
Engine Coolant Temperature Gauge  
Low Air Pressure Indicator (Light and Buzzer)  
Speedometer/Trip Odometer, Electronic  
Tachometer w/Hourmeter, Electronic  
High Beam Indicator  
Parking Brake On Indicator  
Key Type Starting  
Engine Shutoff, Key-Type Control  
Courtesy Light Switch (Head & Clearance)  
Directional Signal

## Exterior Features:

Welded Steel Shell, Galvanized  
MACK Rust Preventative Procedures  
Vents (Screened)  
Fresh Air Inlet for Heater  
Cab Step RH—Two Step Aluminum Frame Mounted  
Safety Glass Windows  
Tinted Windshields, Side & Rear Glass  
Windshield Wipers—Two, Fixed Arm & Blade Type  
Wiper Motor (Electric), (1), Two Speed Intermittent  
Windshield Washers, Electric, Wiper Mtd. with  
5 qt. [4.7 L] Reservoir  
Mirrors, West Coast Bulldog Bright Finish, Includes  
8" Convex RH & LH w/Stainless Steel Arms &  
Brackets  
Headlamps—Halogen, 7" [178 mm] Round  
Daytime Running Lights  
Identification and Clearance Lamps (5)  
Side Markers—Lamps and Reflectors  
Front Turn Signals  
Transistorized Flasher  
Horns, Air, MACK Rectangular Single Trumpet &  
Electric, (Single Tone)  
Doors—Galvanized Steel with:  
Visibility Door with Roll-Up Tinted Windows  
Grab Handles (Stainless Steel), RH & LH Behind Door  
Cab Mounting: Trunnion Front, Air Suspended Rear

**HOOD & FENDERS:**

One Piece Fiberglass with Splash Aprons  
Tilts Forward 90°  
Grille—Argent Silver Metal

**FRAME:**

WB—Wheelbase—210" [5 335 mm]  
LP—Load Platform—196" [4 978 mm]  
CA—Cab to Axle—131" [3 327 mm]  
AF—C/L Axles to End of Frame—65" [1 651 mm]  
Frame Rails—Steel  
Cross Section—10.62" x 3 .25" x .3125" with 1/4" Inside  
Channel Reinforcement  
Section Modulus—23.60 in.<sup>3</sup>  
RBM (per rail) —2,600,000 lb. in.  
Crossmembers—Behind Rear Axle: Web Channel Type  
Behind Rear Axle: Web Channel Type  
[Extended Swept Back Steel Bumper](#)  
BBC—Bumper to Back of Cab—113" [2 870 mm]  
Tow Eyes

**FUEL TANKS:**

Steel  
Capacity/Location, 55 gal [208.2 L] LH

**FRONT AXLE: MACK, FAW12**

12,000 lb [5 443 kg] Capacity  
Meritor Brakes, "S" Cam 16.5" x 5", w/o Dust Shields  
Slack Adjusters—Automatic  
Suspension, MACK Taperleaf Spring with 12,000 lb  
[5 443 kg]  
Ground Load Rating  
34.5" [876 mm] Spring Centers  
Shock Absorbers  
[Integral Power Steering](#)  
Wheel Equipment, Hub Piloted Steel Disc Wheel  
Outboard with Cast Drums and Ferrous Hubs  
Rims, 22.5" x 8.25"  
[Wheel Seals—Oil](#)  
[Tires: 11R22.5 \(singles\)](#)

**REAR AXLE: MACK, SS38R**

38,000 lb [17 237 kg] Capacity Axle  
Carrier—Malleable—CRDPC92/CRD93  
Suspension—SS38R Mack Anti-Sway Multileaf 38,000 lb  
[17 237 kg] Capacity  
Brakes—"S" Cam 16.5" x 7" [419 x 178 mm]  
Meritor "Q-Plus" Brakes w/o Dust Shields  
Slack Adjusters—Automatic  
Aux. Spring Brake Chambers, Tamper  
Resistant 30/30 Double Diaphragm Type,  
Mechanical Spring Release, 4 Units, 2 Mtd. Each Axle  
Wheel Equipment, 22.5" x 8.25" Accuride 10 Hole, 11.25"  
Bolt Circle, Hub Piloted Steel Disc Wheels with  
Cast Drums and Ferrous Hubs  
[Wheel Seals—Oil](#)  
[Tires: 11R22.5 14 \(duals\)](#)

**AIR/BRAKE:**

ABS (Anti-Lock Brake System)  
Dual Air Brake System  
Air Dryer—Heated  
Air Reservoirs—Steel

**ELECTRICAL:**

Polished Aluminum Battery Box Cover  
Chassis Electrical  
Negative Ground  
12-Volt Electrical Circuits and Bulbs  
Fuse Protected Circuits  
Breaker Protected Headlamp & Windshield Wiper Circuits  
Rear Lighting, (2) Combination Stop, Tail Directional &  
Back-up Lights

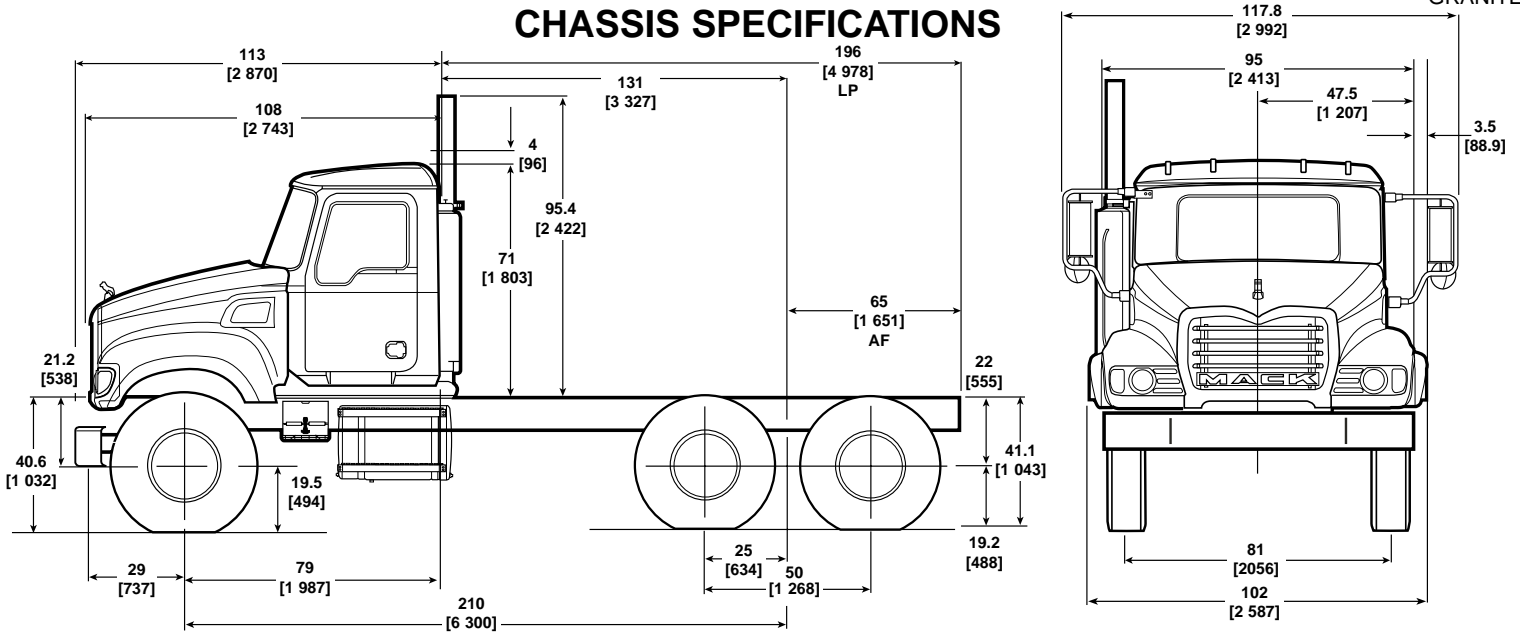
**PAINT:**

Cab, Hood and Fenders  
Color: MACK White, High Gloss  
Chassis Running Gear  
Color: MACK Black (Urethane)

**WEIGHT:**

Front: 7,956  
Rear: 7,602  
TOTAL: 15,558

## CHASSIS SPECIFICATIONS



## AVAILABLE DRIVELINE COMPONENTS

ENGINES			
MODEL	*HORSEPOWER @ GOV'D. RPM	MODEL	*HORSEPOWER @ GOV'D. RPM
<b>MACK</b>			
AI-300A ASET IEGR (For Use with Automatic Only)	300 HP [224 kW] @ 1950 325 HP [243 kW] @ 1700	AI-350 ASET IEGR	350 HP [261 kW] @ 1950 350 HP [261 kW] @ 1600-1950
AMI-300 ASET IEGR	300 HP [224 kW] @ 2100 325 HP [243 kW] @ 1700-1900	AI-400 ASET IEGR	400 HP [298 kW] @ 1950 400 HP [298 kW] @ 1600-1950
AMI-335 ASET IEGR	335 HP [250 kW] @ 2100 365 HP [272 kW] @ 1700-1900	AI-427 ASET IEGR	427 HP [318 kW] @ 1950 427 HP [318 kW] @ 1600-1950
AMI-370 ASET IEGR	370 HP [276 kW] @ 2100 405 HP [302 kW] @ 1700-1900	AI-460 ASET CEGR	460 HP [343 kW] @ 1950 460 HP [343 kW] @ 1600-1950

TRANSMISSIONS		
MODEL	SPEEDS	RATIOS (LOW/HIGH)
<b>MACK</b>		
TM308	8	17.77/0.71
TM308M	8	17.77/0.71
TM309	9	25.21/0.71
TM309M	9	25.21/0.71
T309	9	11.40/0.71
T309(L)	9	13.93/0.71
T309(LR)	9	13.93/0.71
T310	10	13.81/0.73
T310M	10	17.35/0.73
T310ME	10	17.35/0.73
T310MLR	10	27.31/0.71
T313 LR	13	16.42/0.71
T313 L	13	16.42/0.71
T318LR	18	16.42/0.71
T318L	18	16.42/0.71
<b>ALLISON</b>		
4500 RDS	5	4.70/0.76
4500 RDS	6	4.70/0.67
4000 RDS	5	3.51/0.74
4000 RDS	6	3.51/0.64
4500 RDS R	5	4.70/0.76
4500 RDS R	6	4.70/0.67
4000 RDS R	5	3.51/0.74
4000 RDS R	6	3.51/0.64
<b>FULLER</b>		
RTX-13609B	9	12.57/0.73
RTX-14609B	9	12.56/0.73
RTX-16709B	9	12.57/0.73
RTO-14908LL	10	14.56/0.74
RTO-16908LL	10	14.56/0.74
FR0-16210C	10	12.69/0.74
RTO-14909ALL	11	26.08/0.73
RTO-16909ALL	11	26.08/0.73

AXLES		
CAPACITY	MAKE	MODEL
<b>FRONT AXLES</b>		
12,000 lb. [5 443 kg]	MACK	FAW12
14,300 lb. [6 486 kg]	MACK	FAW14.3
14,600 lb. [6 623 kg]	MERITOR	FG941
18,000 lb. [8 165 kg]	MACK	FXL18/FAW18
20,000 lb. [9 072 kg]	MACK	FXL20/FAW20
<b>TANDEM REAR AXLES</b>		
38,000 lb. [17 239 kg]	MACK	S38R/SB38R
40,000 lb. [18 144 kg]	MACK	SB38R
	DANA SPICER	DS405P
	MERITOR	RT40-145
44,000 lb. [19 958 kg]	MACK	S440
46,000 lb. [20 866 kg]	MACK	S462/S440
	DANA SPICER	DS463P
	MERITOR	RT46-160
52,000 lb. [23 636 kg]	MACK	S52
58,000 lb. [26 309 kg]	MACK	S582
65,000 lb. [29 484 kg]	MACK	S652

## OPTIONAL EQUIPMENT

### FRAME:

#### Standard Frame w/Optional Reinforcement

10.62" x 3.25" x .312" with 9.93" x 2.93" x .250" inside channel reinforcement  
Section Modulus: 23.60 in.<sup>3</sup>  
Resisting Bending Moment, RBM: 2,600,000 lbs. in. [294 000 N•m]

#### Optional Frame without Reinforcement

10.75" x 3.25" x .375" without 9.93" x 2.93" x .250" inside channel reinforcement  
Section Modulus: 16.98 in.<sup>3</sup>  
Resisting Bending Moment, RBM: 1,870,000 lbs. in. [211 275 N•m]

#### Optional Frame w/Optional Reinforcement

10.75" x 3.25" x .375" with 9.93" x 2.93" x .250" inside channel reinforcement  
Section Modulus: 26.06 in.<sup>3</sup>  
Resisting Bending Moment, RBM: 2,870,000 lbs. in. [324 275 N•m]

#### 20" Front Frame Extension for Snow Plow Mount (Continuation of Parent Frame)

##### Rail Dimensions:

10.62" x 3.25" x .312" with 9.93" x 2.93" x .250" inside channel reinforcement  
Section Modulus: 23.60 in.<sup>3</sup>  
Resisting Bending Moment, RBM: 2,600,000 lbs. in. [294 000 N•m]

10.79" x 3.25" x .394" with 9.93" x 2.93" x .250" inside channel reinforcement  
Section Modulus: 27.780 in.<sup>3</sup>  
Resisting Bending Moment, RBM: 3,055,000 lbs. in. [345 159 N•m]

#### Wheelbase Availability

163" [4 140 mm] to 300" [7 620 mm]

### CAB, INTERIOR TRIM LEVELS:

**"Contractor"**: For complete description, refer to Price Book or MackTraQ

**"Custom"**: For complete description, refer to Price Book or MackTraQ

**"Premier"**: For complete description, refer to Price Book or MackTraQ

### OTHER OPTIONAL EQUIPMENT:

Air Conditioner, Integral Comb Unit  
Air Dryers  
Air System, Increased Volume  
Alcohol Evaporation  
All Hose Chassis  
Aluminum Air Reservoirs  
Aluminum Battery Boxes and Covers  
Aluminum Bumpers  
Back-up Alarm  
Body Power Cable  
Bright Finish Equipment:  
  Battery Box Covers  
  Bumpers  
  Fuel Tank Steps & Straps  
  Polished Aluminum Air Reservoirs  
  Polished Aluminum Disc Wheels  
  Front Wheel Nuts  
  Radiator Guard  
Bumper, Swept Back w/Center Tow Pin  
Crossmembers, I-Beam Type  
Engine Brake  
Engine Cold Starting Aids  
Engine Heaters  
Engine Protection Shutdown System  
Flasher, Transistorized  
Fuel Heaters  
Gauge Cluster Options:

Air Application  
Air Restriction  
Axle Oil Temperature  
Engine Oil Temperature  
Exhaust Pyrometer  
Fuel Pressure  
Manifold Pressure  
Transmission Oil Temperature  
Hand Control Valve  
Hood, Fiberglass with Inspection Hatch  
Hubodometer  
Inside—Outside Air Intake  
Interwheel Power Divider  
Mirror Options  
Mud Flaps  
Paint—Special Paint Designs  
Pintle Hook—10 Ton  
Power Take-Off Options:  
  REPTO  
  Front End PTO (Crankshaft Adapter)  
Power Windows and Door Locks  
Pusher/Tag Axle Mtg. Clearance  
Radiator Guard  
Radio Options, Stereo/Cassette  
Seat Options, Driver & Rider  
Semi or Full Trailer Connections Package  
Sliding Rear Window  
Sun Visor, Exterior

Synthetic Lubricants  
Tandem Axle Spacing Options  
Trailer Access Package  
Trailer Hook-up Lamp  
Waterproof Electrical Connections  
Wheel Equipment:  
  Cast Spoke, Steel or Aluminum Disc

OTHER COMPONENT OPTIONS  
MAY BE AVAILABLE UPON REQUEST